



## Blackwood 194

### BEDROOMS

Master Bedroom	3600 x 3800
Bedroom 2	3000 x 3400
Bedroom 3	3460 x 3020
Bedroom 4	3000 x 3300

### LIVING AREAS

Living	5130 x 4430
Dining	3030 x 4020

### OUTDOOR

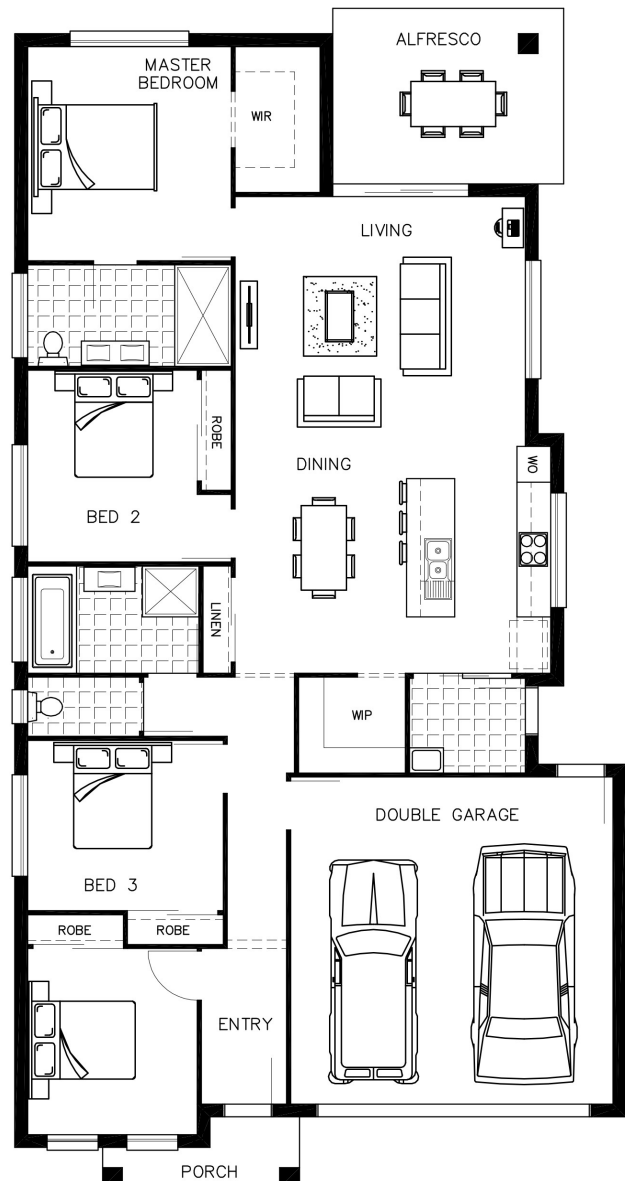
Alfresco	3630 x 2660
Garage	5700 x 5800

### FLOOR AREA:

TOTAL	194.49m <sup>2</sup> (20.93sq)
Width:	10.80m
Depth:	20.45m

### MIN BLOCK SIZE:

Width	12.00m
-------	--------



  
**MORETON HOMES**  
*Building Affordable Homes Since 1986*

QBCC: 22745

P: 07 5347 9091 E: sales@moretonhomes.com.au

[www.moretonhomes.com.au](http://www.moretonhomes.com.au)

THIS DESIGN IN PART OR WHOLE IS SUBJECT TO COPYRIGHT©