



## Spruce 199

### BEDROOMS

Master Bedroom	3540 x 3600
Bedroom 2	3000 x 3000
Bedroom 3	3000 x 3000
Bedroom 4	2900 x 3400

### LIVING AREAS

Family	4940 x 4160
Dining	3700 x 3600
Media	3800 x 3400

### OUTDOOR

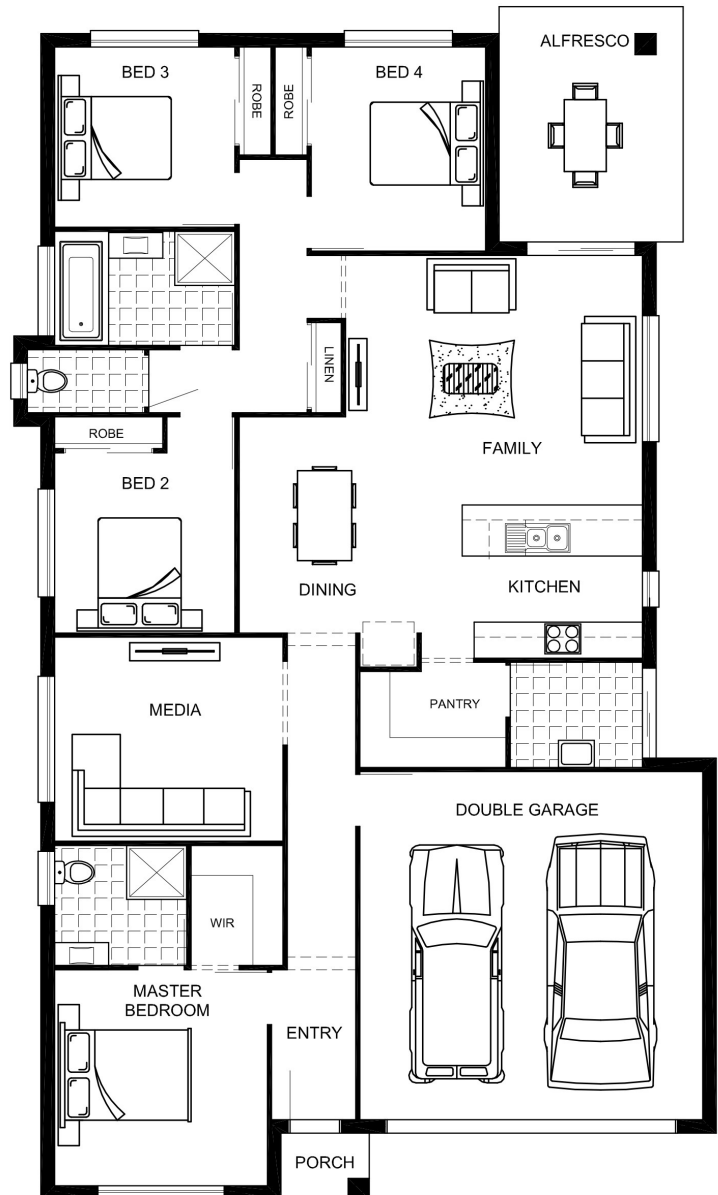
Alfresco	3060 x 3920
Garage	5700 x 5800

### FLOOR AREA:

TOTAL	200.35m <sup>2</sup> (21.57sq)
Width:	11.23m
Depth:	19.32m

### MIN BLOCK SIZE:

Width	13.10m
-------	--------



**MORETON HOMES**  
Building Affordable Homes Since 1986

QBCC: 22745

P: 07 5347 9091 E: sales@moretonhomes.com.au

[www.moretonhomes.com.au](http://www.moretonhomes.com.au)

THIS DESIGN IN PART OR WHOLE IS SUBJECT TO COPYRIGHT©

DISCLAIMER- The details shown on this brochure are for advertising purpose only and do not form part of any standard inclusions, contracts or specifications. Please confirm all inclusions in writing directly with the Builder prior to entering into any preliminary agreements or building contracts.